

MS-225-3



**MS-225-3**

Miniature Reed Sensor  
M5 metal thread

Electrical Characteristics		@ 25 °
Contact form		A
Contact rating max.	W / VA	10
Switching voltage max.	VDC	180
	VAC	130
Switching current max.	A	0.7
Carry current max.	A	1
Breakdown voltage min.	VDC	200
Total resistance max. (initial)	mΩ	300
Insulation resistance min.	Ω	10 <sup>9</sup>

Features
> Adjustable switching point
> Metal housing with M5 thread
> Various sensitivity ranges available
> typ. Load resistive

Magnetical Characteristics (of unmodified Reed Switch)		@ 25 °
Pull in range available	AT	10 - 25
Drop out min.	AT	4
Test coil	TC	010
Test equipment tolerance	± AT	2

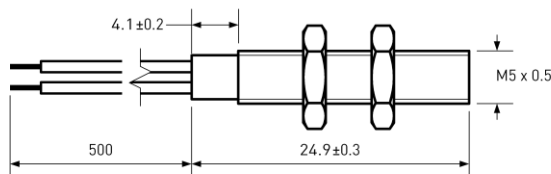
Approvals

Contact PIC for Agency Ratings!

Operating Characteristics (of unmodified Reed Switch)		@ 25 °
Switching frequency max.	Hz	500
Resonant frequency typ.	Hz	5000
Operate time max. (incl. bounce)	ms	0.5
Release time max.	ms	0.3

Environmental Characteristics		
Operating temperature	°C	-20 to +85
Vibration (50-2000 Hz)	g	20
Shock (1/2 sin 11 ms)	g	100

Dimensions in mm

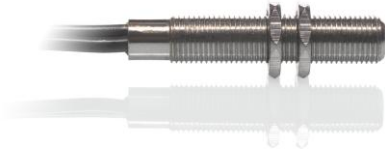


Ordering Information	
Packing Unit	50 pcs
Weight per piece	4.5 g
Weight per package	240 g
Standard AT Ranges	
1	= 10 to 15 AT
2	= 15 to 20 AT
3	= 20 to 25 AT

Ordering Example  
MS-225-3-2 describes MS-225-3 with 15 to 20 AT.

© PIC GmbH

MS-225-3



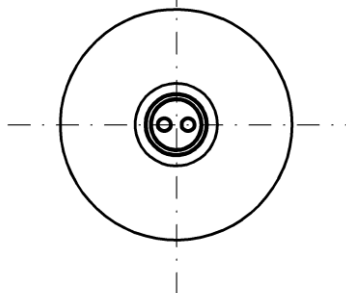
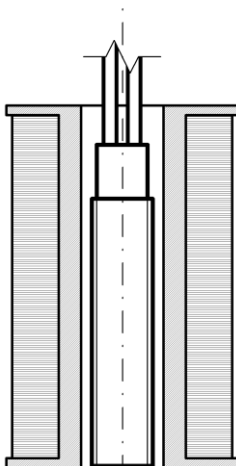
**MS-225-3**

Miniature Reed Sensor  
M5 metal thread

Material Information

	Material	Colour
Housing	Brass, Nickel plated	
Cable	UL 1061, AWG 28, 4 mm stripped and tinned	black
Potting compound	Epoxy	black
Nuts	Brass, Nickel plated, M5, 2 pcs preassembled	

Test Procedure of final Reed Sensor



- Test Coil placed in vertical position
- Reed Sensor aligns with bottom line
- Reed Sensor centered in Test Coil
- Measured without nuts

Test Parameters

Test coil	TC-093
Test programs	
AT range	Test program
1 =	MS-225-3-1
2 =	MS-225-3-2
3 =	MS-225-3-3

Remarks

When mounted onto ferromagnetic parts switching distance of MS-225-3 may reduce. Electromagnetical influences and magnetic fields may change the switching behaviour of the sensor.

Matching actuator MSM-225 available as well.