



MSM-2210M

Threaded Magnet M10

RoHS

REACH

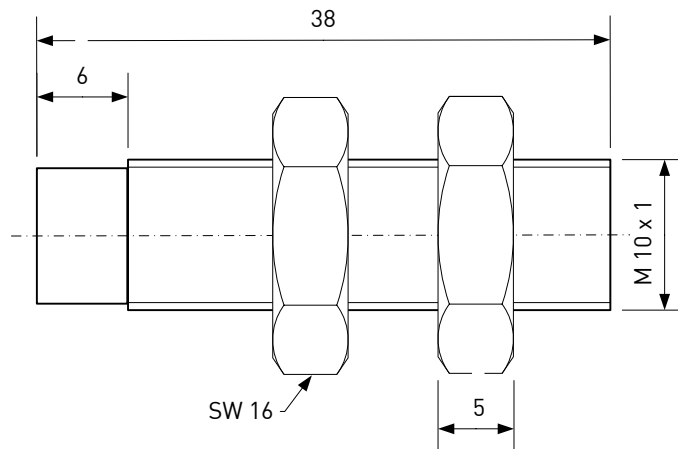
Data

Housing Material	brass H59, Nickel plated
Potting Material	Epoxy, black
Orientation	axially

Magnetic Material	N30H	
Remanence Br	mT	1105
Coercivity HcB	kA/m	836
Coercivity HcJ	kA/m	1274
Energy Product (BH) max.	kJ/m ³	235
Magnetic Moment M	x10 ⁻⁶ Vs cm	43,6
Operating Temperature	°C	-20 to 85
Temperature Coefficient Tk(Br)	%/°C	-0.11

Nominal values unless otherwise specified

Dimensions in mm



Customized types, other magnet materials and high temperature grades available.