

MS-2212M-4



MS-2212M-4

Form C Reed Sensor

Electrical Characteristics @ 25 °C

Contact form		C
Contact rating max.	W / VA	5
Switching voltage max.	VDC	175
	VAC	120
Switching current max.	A	0.25
	Carry current max.	A
Breakdown voltage min.	VDC	200
Total resistance max. (initial)	mΩ	200
Insulation resistance min.	Ω	10 ⁹

Features

- Customized types available
- Metal housing with M12 thread
- Mechanically protected
- Adjustable switching point

Magnetical Characteristics (of unmodified Reed Switch) @ 25 °C

Pull in range available	AT	15 - 30
Drop out min.	AT	5
Test coil	TC	200
Test equipment tolerance	± AT	2

Approvals



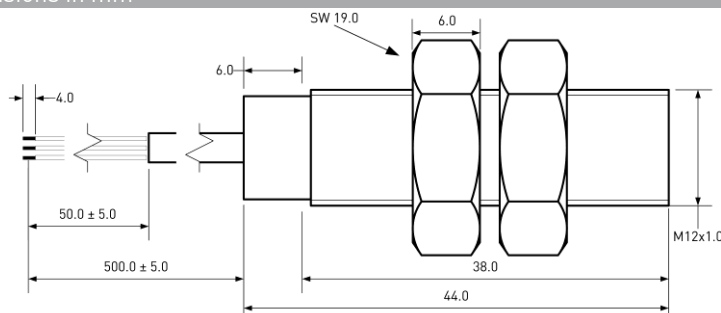
Operating Characteristics (of unmodified Reed Switch) @ 25 °C

Switching frequency max.	Hz	100
Resonant frequency typ.	Hz	1100
Operate time max. (incl. bounce)	ms	0.7
Release time max.	ms	1

Environmental Characteristics

Operating temperature	°C	-20 to +85
Vibration (50-2000 Hz)	g	30
Shock (1/2 sin 11 ms)	g	5

Dimensions in mm



Ordering Information

Packing Unit	25 pcs
Weight per piece	0 g
Weight per package	0 g
Standard AT Ranges	
	2 = 15 to 20 AT
	3 = 20 to 25 AT
	4 = 25 to 30 AT

Ordering Example

MS-2212M-4-2-0500 describes
MS-2212M-4 with 15-20 AT

MS-2212M-4



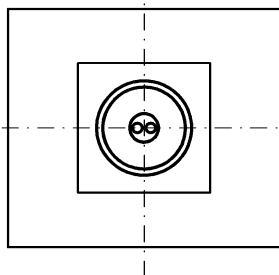
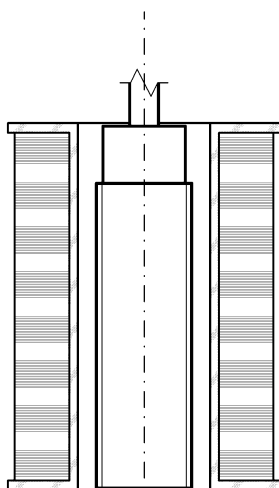
MS-2212M-4

Form C Reed Sensor

Material Information

	Material	Colour
Housing	Brass, Nickel plated	
Cable	UL 2464, AWG 24, 50 mm dismantled, 4mm stripped and tinned	COM: black, NO: red, NC: brown
Nuts	Brass, Nickel plated, M12, 2 pcs separately packed	
Potting compound	Epoxy	black

Test Procedure of final Reed Sensor



Test Coil placed in vertical position

Reed Sensor centered in Test Coil

Measured without nuts

Test Parameters

Test coil	TC-324
Test programs	
AT range	Test program
2 =	-2
3 =	-3
4 =	-4

Remarks

When mounted onto ferromagnetic parts switching distance of MS-2212M-4 may reduce.
Electromagnetical influences and magnetic fields may change the switching behaviour of the sensor.

Only non-ferromagnetic screws to be used for mounting.

Matching actuator MSM-... available as well.